

BSB 785 (LitOUTer) Project
“Raising Public Awareness and Reducing Marine Litter for Protection of the Black Sea Ecosystem”
Training report for Adults

***Each partner will fill this report for each training organized.**

1. Project Partner Name: KTU-LP
2. Country: Turkey
3. Training Date & Time: June 22nd, 2022; 90 minutes
4. Training type (Personal/Online/Hybrid): Online
5. Target Group (Children, students, young people/adults): Adults
6. Number of participants: 13 people
7. Training Structure/Agenda:

In the scope of the BSB 785 LitOUTer project, another training to raise public awareness on reducing marine litter was conducted. The training is especially aimed at the architects and engineers' community. We believed that providing such training will contribute to increasing awareness of marine litter among architects and engineers community is expected to produce solutions to reduce construction waste and prevent entering into the environment for the Black Sea ecosystem protection.

This training was organized by the LitOUTer Project in collaboration with the Association of Women Architects and Engineers in Trabzon. At least fourteen people participated in the online training via Zoom meeting. Four project team members (Fatma, Coşkun, Ertuğ, and Neira) took part in the training.

8. Materials used:
 1. Slide presentation for adults
 2. “ATMA” movie
 3. Video footage of plastic litter on fish abdomen;
 4. Marine litter transportation in the Black Sea basin animation;

Common borders. Common solutions.

9. Training running:

The training was started with a discussion to provide an understanding of marine litter (sources, impact, and solutions) starting from the participants' work environment to the complex society (Earth as a system). The general structure of the training presentation were the aims of the project, the definition of marine litter and sources, the lifetime of some of the most common materials in the marine environment, the effects of marine litter on daily activities and health problem, possible solutions to decrease the marine litter in the environment. The introduction was delivered by Assoc.Prof.Dr. Coşkun ERÜZ as the project leader. Afterward, the training was guided by Prof.Dr. Fatma Telli KARAKOÇ.

The indoor and outdoor constructions result in a high amount of solid waste. A very small amount of construction waste is recycled. Most construction wastes ended up in the environment creating pollution. Especially construction materials made of plastics such as foam (materials used for construction) are one of the marine litter sources. The participants were presented with an example of solid waste resulting from construction activity. These samples were collected by architect students for the training. As a result, plastic (35%), paper (26%) and metal (24%) materials dominated solid waste compositions. Iron construction 209 pieces and foam 186 pieces were the most commonly found solid waste in the construction areas. Afterward, a discussion and sharing experiences on reducing waste has been conducted.

During the training, participants were showing their awareness and enthusiasm by questioning and sharing their experience of handling litter at home and work environment. Later, the presentation project publication materials such as toys for marine litter topic education were shown. After the training, some participants approached us to express their concerns about marine litter's impact on the marine environment and how to reduce it.

10. Training impact:

We believe that providing education to this community will contribute to behavior change including reducing litter in their house, community, and working environment. The training was able to convince the participants of the urgency to develop a new working system with less waste to protect the Black Sea ecosystem.

11. Training feedback:

During the session, Prof.Dr. Ertuğ DÜZGÜNEŞ suggested creating a new working system with a higher level of awareness of marine litter and less waste by providing a sufficient number of garbage bins and recycling more materials in the construction areas. At the end of the training, participants were showing their gratitude and said that they learned many during the training and promised will be more concerned about the marine litter problem in the future. Participants agreed that improving their behavior on handling litter at home and work environment could be the solution to the problem.

Common borders. Common solutions.



Project funded by
EUROPEAN UNION



12. Lessons Learned:

Various training approaches are required in building communication with adults from different backgrounds. Adults tend to see a problem from their perspective however if we can nudge their intention related to the issue they can create a solutive solution on their own.

Every input and feedbacks related to marine litter problems shared by participants are worth to be listened by the presenter (trainer). This is important to gain trust and draw other participants' attention to focus on the problem-solving offered by the presenter (trainer).

It is believed that two-way communication approaches such as interactive discussion and sharing experiences are more effective in drawing participants' attention to the training topics so we are going to continue on this subject.

13. Participants List:

No.	Name
1	Fatma Telli KARAKOÇ
2	Coşkun ERÜZ
3	Neira Purwanty İSMAİL
4	Ertuğ DÜZGÜNEŞ
5	Güler ERÜZ
6	Leyla
7	Bilgi
8	Pınar
9	Raif KANDEMİR
10	Sabri MALKOÇ
11	Selay
12	Şener EROL
13	Gönül AKAN
14	

Common borders. Common solutions.



Project funded by
EUROPEAN UNION



Participants (14)

Find a participant

NP	Neira Purwanti Ismail (Me)	/
CO	COŞKUN ERÖZ-LitOUTer (Host)	/
FT	Fatma Telli Karakoç	/
GA	Galaxy A9 (2018)	/
GE	Güler Eröz Kadın Mimar Ve Müh. Der. Bşk	/
B	bilgi	/
ED	Ertuğ Duzgunes KTÜ, TR	/
L	Leyla	/
P	Pınar	/
RK	Raif Kandemir	/
SM	Sabri MALKOÇ	/
SI	Selay iPhoncu	/
S	Şener EROL	/
GA	Gönlü AKAN	/

Invite Unmute Me Merge to Meeting Window

22°C Çok bulu... TUR 21:22

Common borders. Common solutions.



Project funded by
EUROPEAN UNION



14. Training pictures: Photos from the training

Zoom Meeting

Participants (11)

Find a participant

Neira Purwanti...
COŞKUN ERÖZ-LitOUTer
Fatma Telli Karakoç
Leyla
Güler Eröz Kadın Mimar Ve Müh...
Ertuğ Duzgunes... KTÜ, TR

Project funded by
EUROPEAN UNION

LitOUTer

Black Sea
CROSS BORDER
COOPERATION

Common borders. Common solutions.

DENİZLERİMİZDEKİ ÇÖPLER VE DOĞADA KALIŞ SÜRELERİ

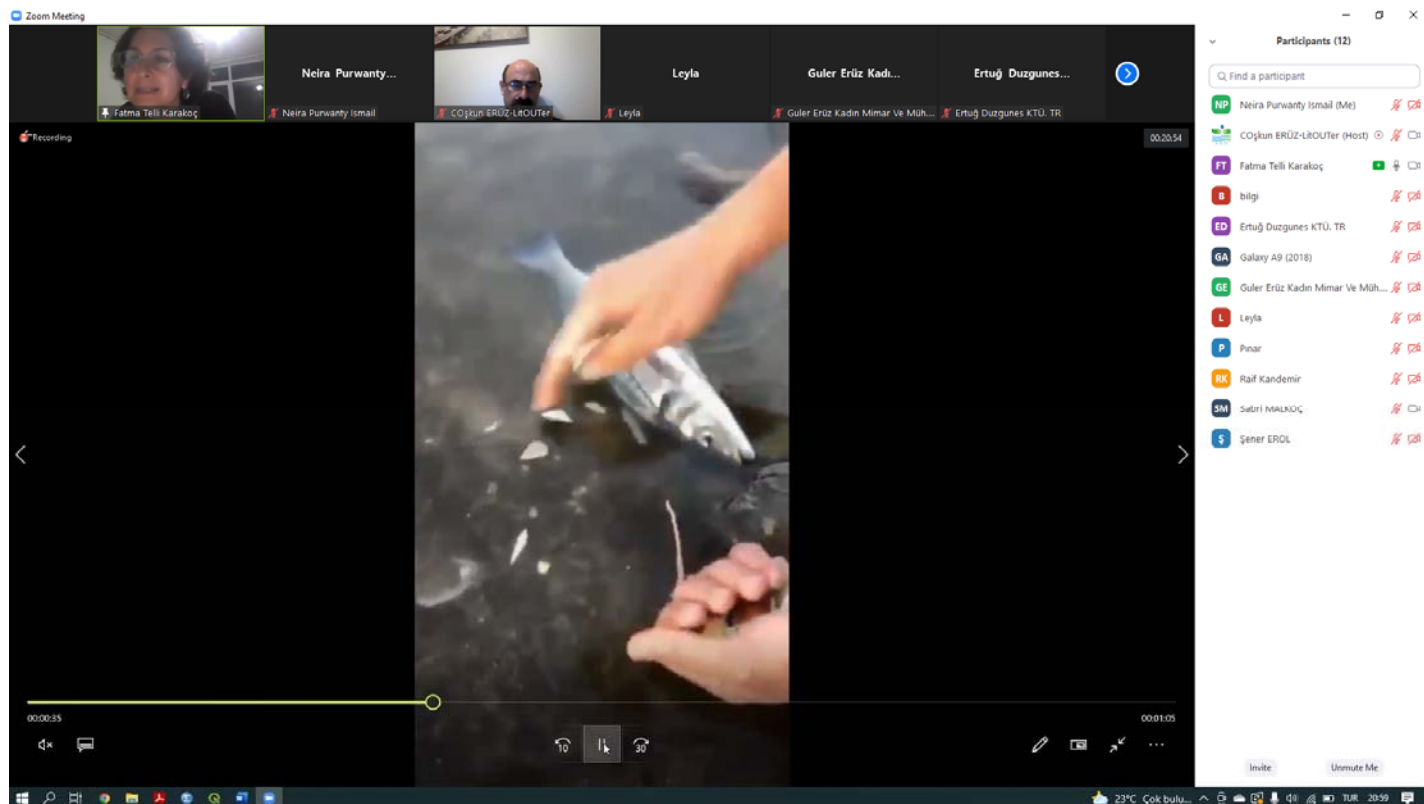
450 yıl	200 yıl	450 yıl	450 yıl	1-5 yıl
50-80 yıl	500 yıl	1 milyon yıl	600 yıl	

23°C Çok bulu...
TÜRKİYE 20:45

Common borders. Common solutions.



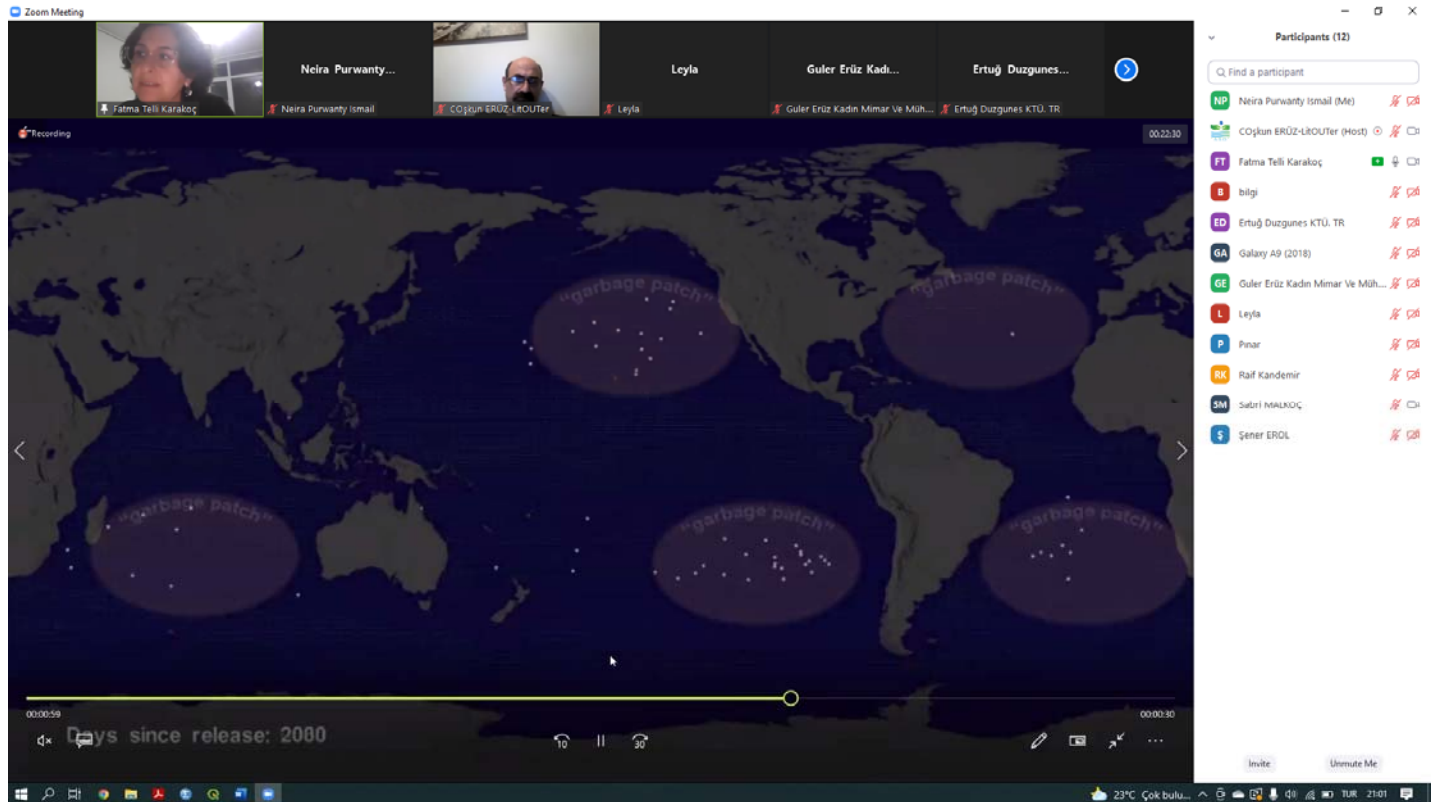
Project funded by
EUROPEAN UNION



Common borders. Common solutions.



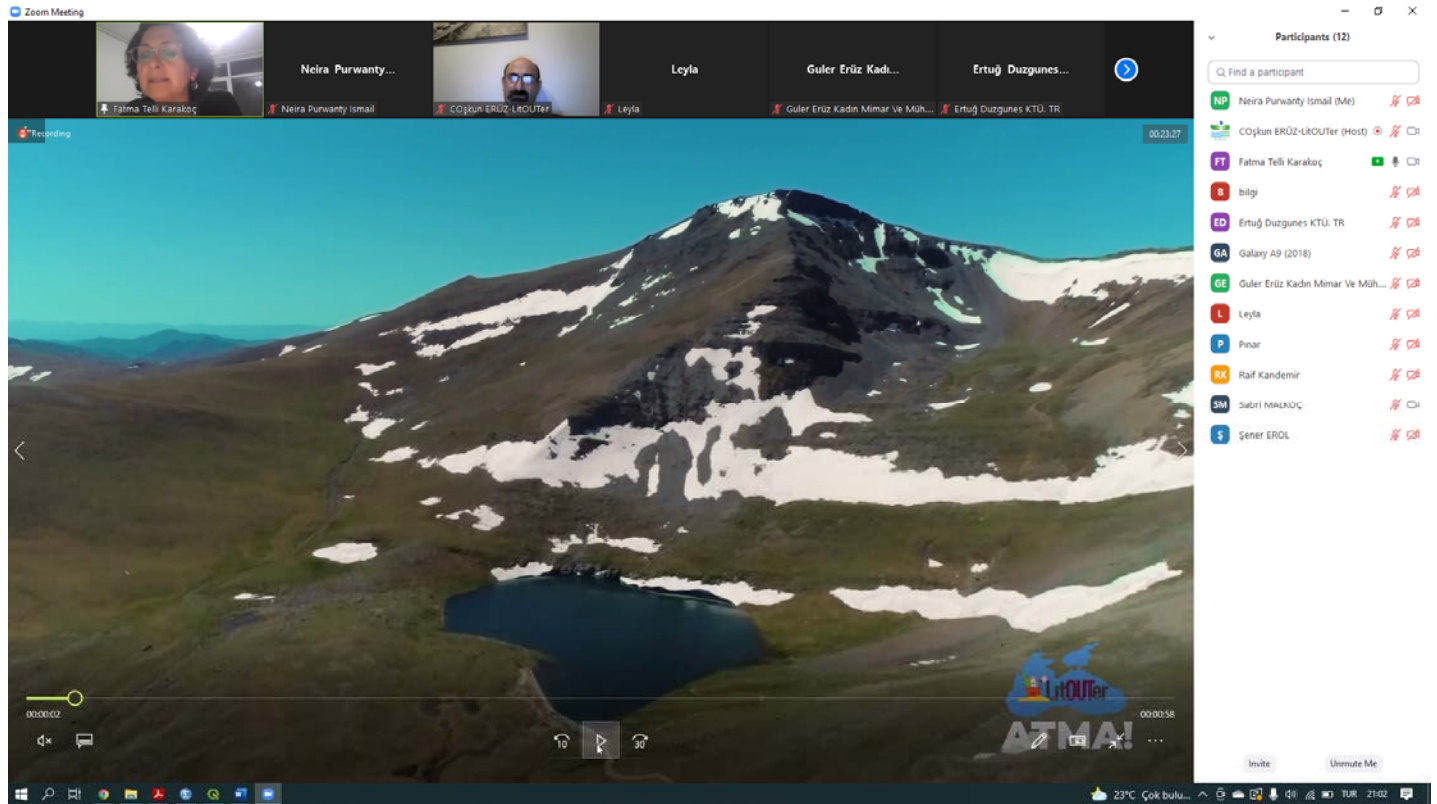
Project funded by
EUROPEAN UNION



Common borders. Common solutions.



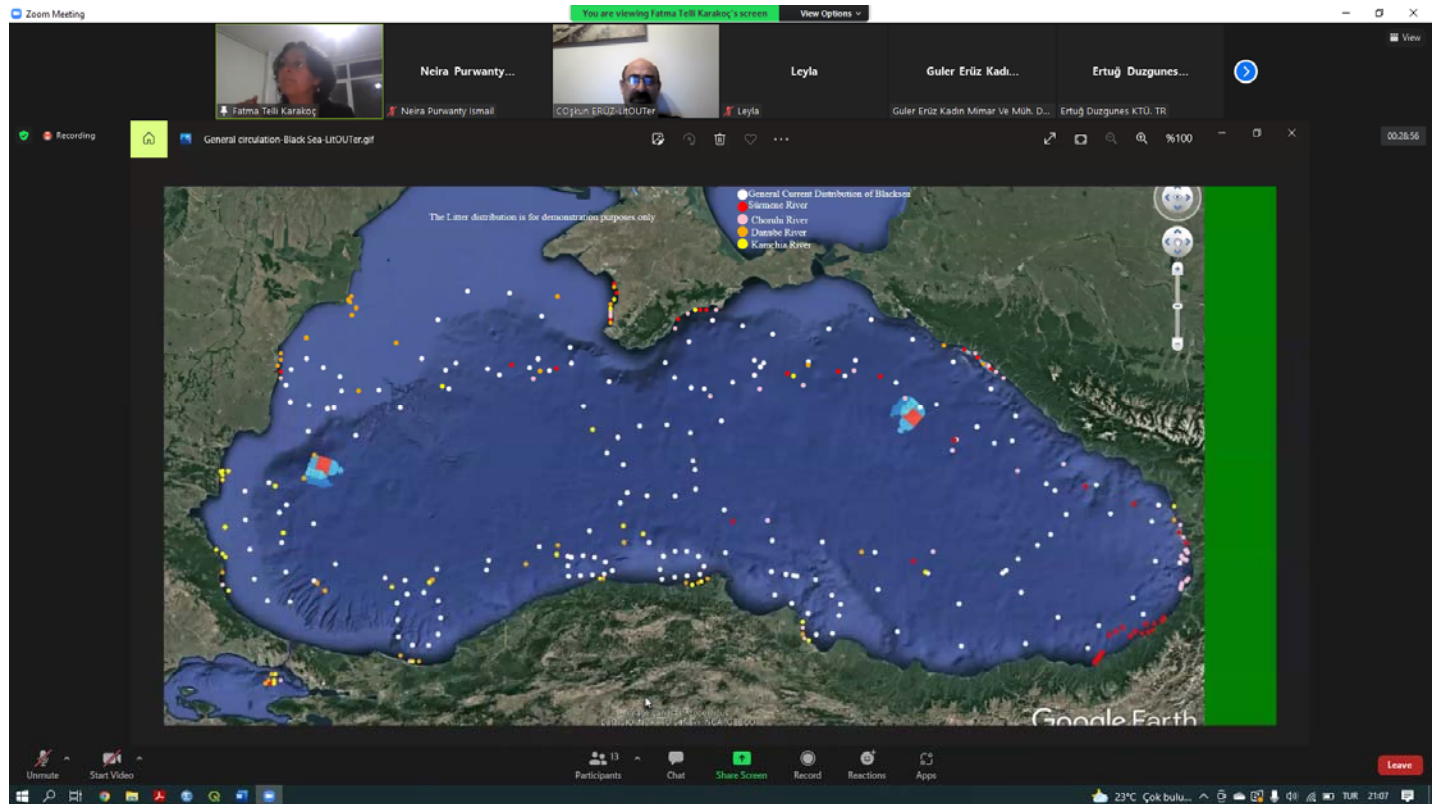
Project funded by
EUROPEAN UNION



Common borders. Common solutions.



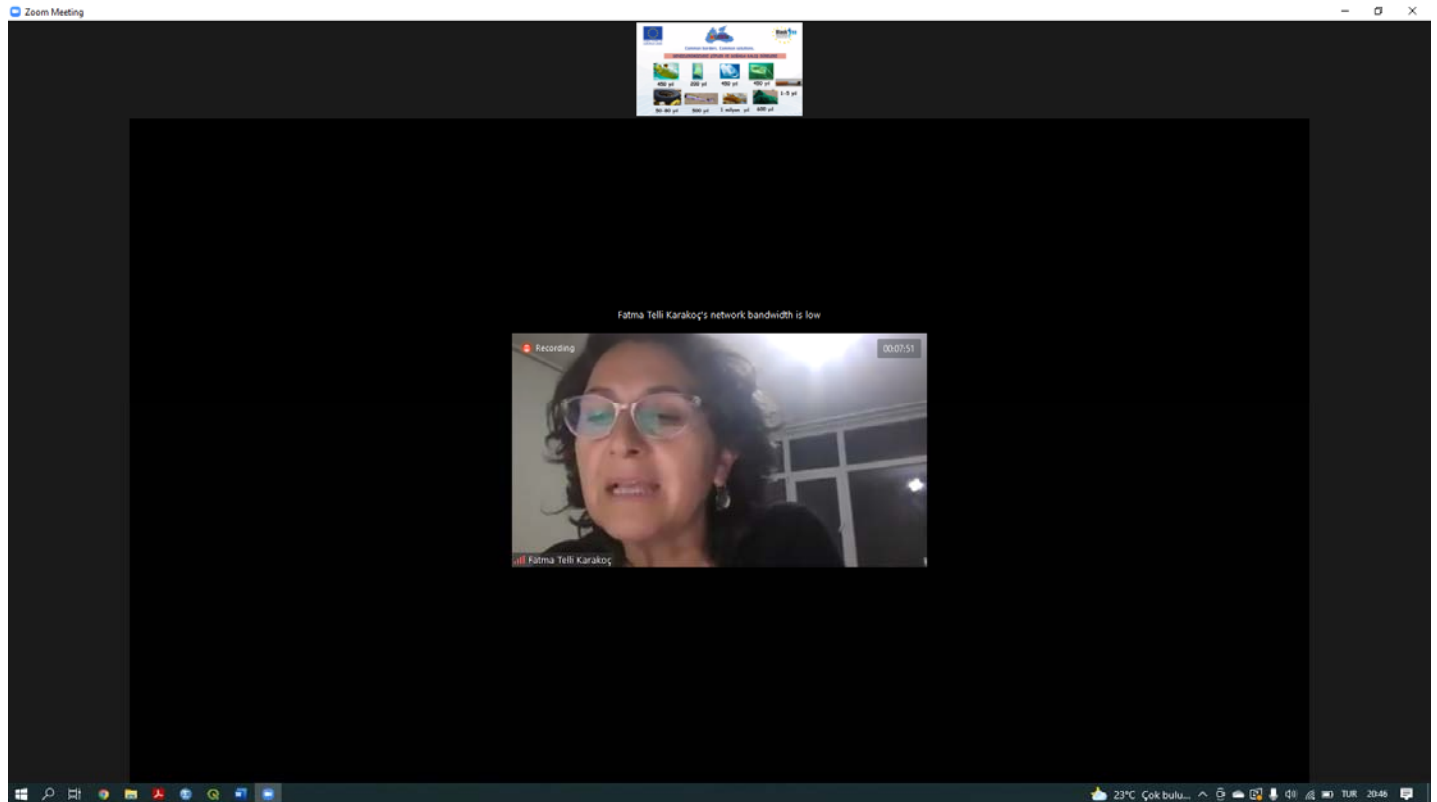
Project funded by
EUROPEAN UNION



Common borders. Common solutions.



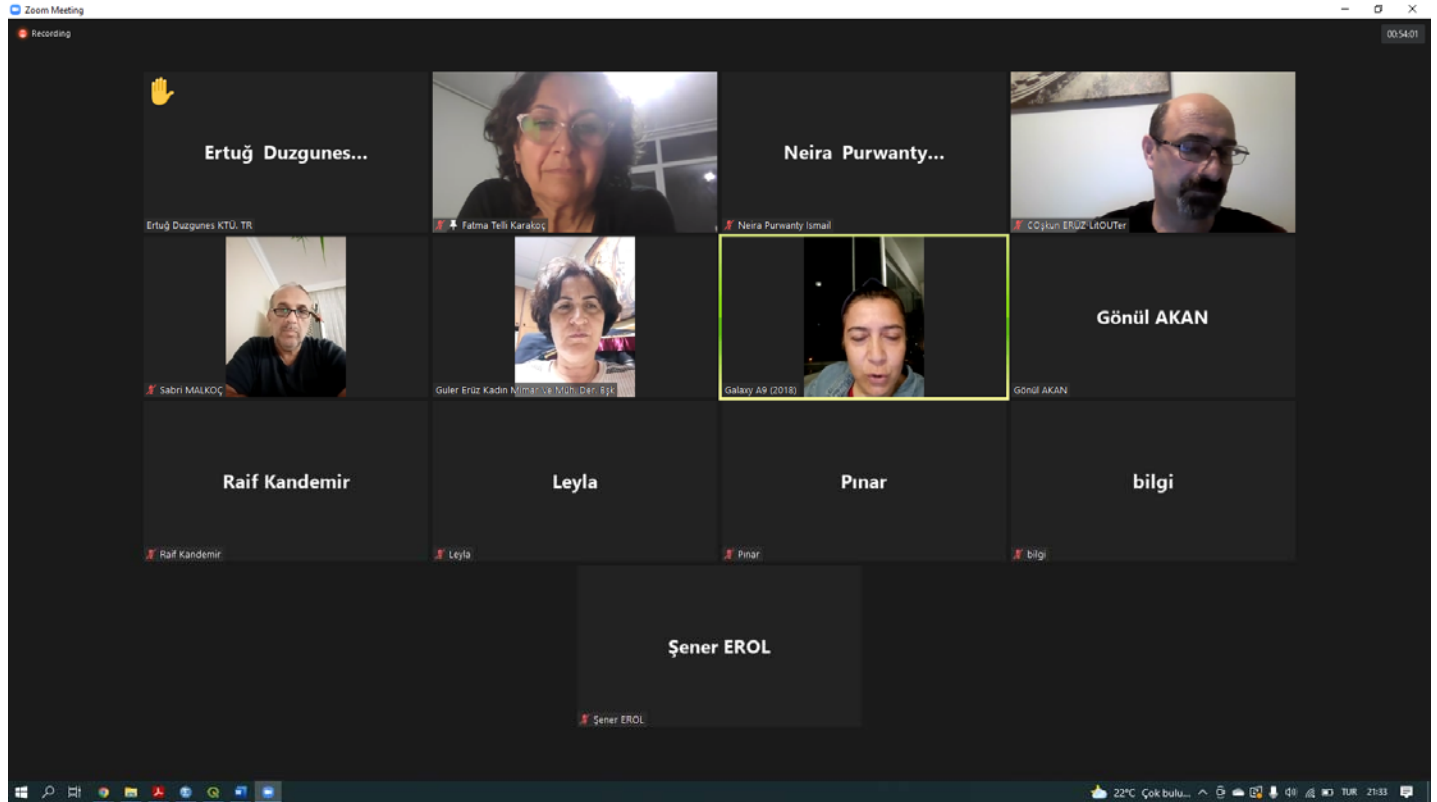
Project funded by
EUROPEAN UNION



Common borders. Common solutions.



Project funded by
EUROPEAN UNION



Common borders. Common solutions.



Project funded by
EUROPEAN UNION



Zoom Meeting

Participants (12)

Find a participant

NP Neira Purwanti (Ismail (Me) /x /x

CO Çoşkun ERÖZ-LitOUTer (Host) /x /x

FT Fatma Telli Karakoç /x /x

B bilgi /x /x

ED Ertuğ Duzgunes KTÜ, TR /x /x

GA Galany A9 (2018) /x /x

GE Guler Erüz Kadın Mimar Ve Müh... /x /x

L Leyla /x /x

P Pınar /x /x

KK Raif Kandemir /x /x

SM Seleni İNALKOÇ /x /x

S Şener ERDL /x /x

Project funded by
EUROPEAN UNION

LitOUTer

Black Sea
CROSS BORDER
COOPERATION

Common borders. Common solutions.

DENİZLERİMİZDEKİ BALIKLAR VE ÖMÜRLERİ

100 yıl

25 yıl

4 yıl

4-5 yıl

6 yıl

3-4 yıl

23°C Çok bulu... /x /x

TUR 20:50

Common borders. Common solutions.



Zoom Meeting

You are viewing Fatma Telli Karakoc's screen

View Options

Recording

00:44:59

KORUMALI GÖRÜNÜM

Dikkatli olarak internet kaynakları verisi işleyebilir. Düzenlemeniz gerektirmiyorsa, Korumalı Görünümde kalmamız daha güvenli olur.

Düzenlemeyi Etkinleştir

1

2

3

4

Atık kategorisine göre:

- %35'si plastik,
- %26'sı kağıt,
- %24'u metal,
- %6'sı kumaş,
- %4'u cam,
- %4'u ahşap,
- %1'i Covid-19 ilgili,

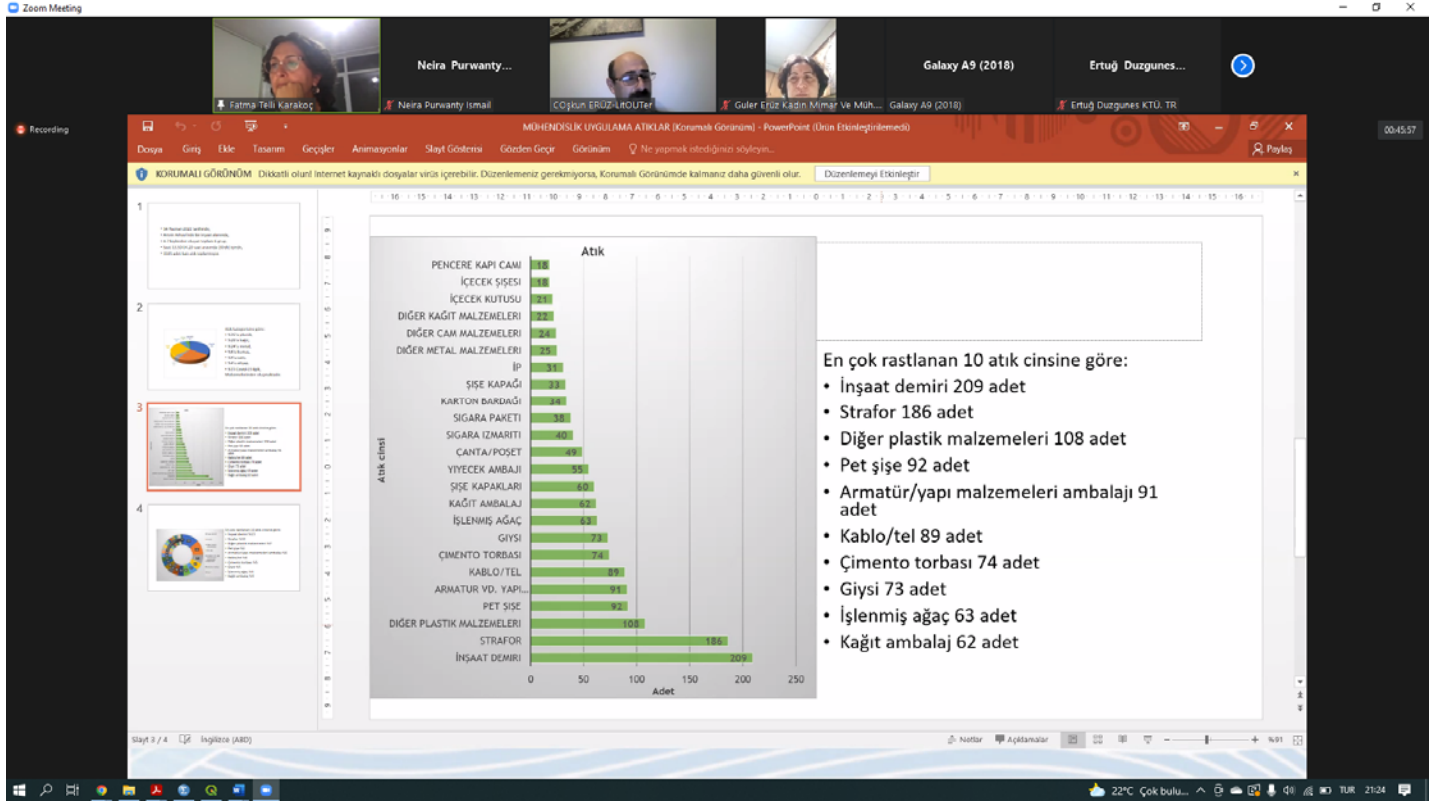
Malzemelerinden oluşmaktadır.

Atık Kategorisi	Oran (%)
Plastik	35
Kağıt	26
Metal	24
Kumaş	6
Cam	4
Ahşap	4
Covid19	1

Common borders. Common solutions.



Project funded by
EUROPEAN UNION



Common borders. Common solutions.